



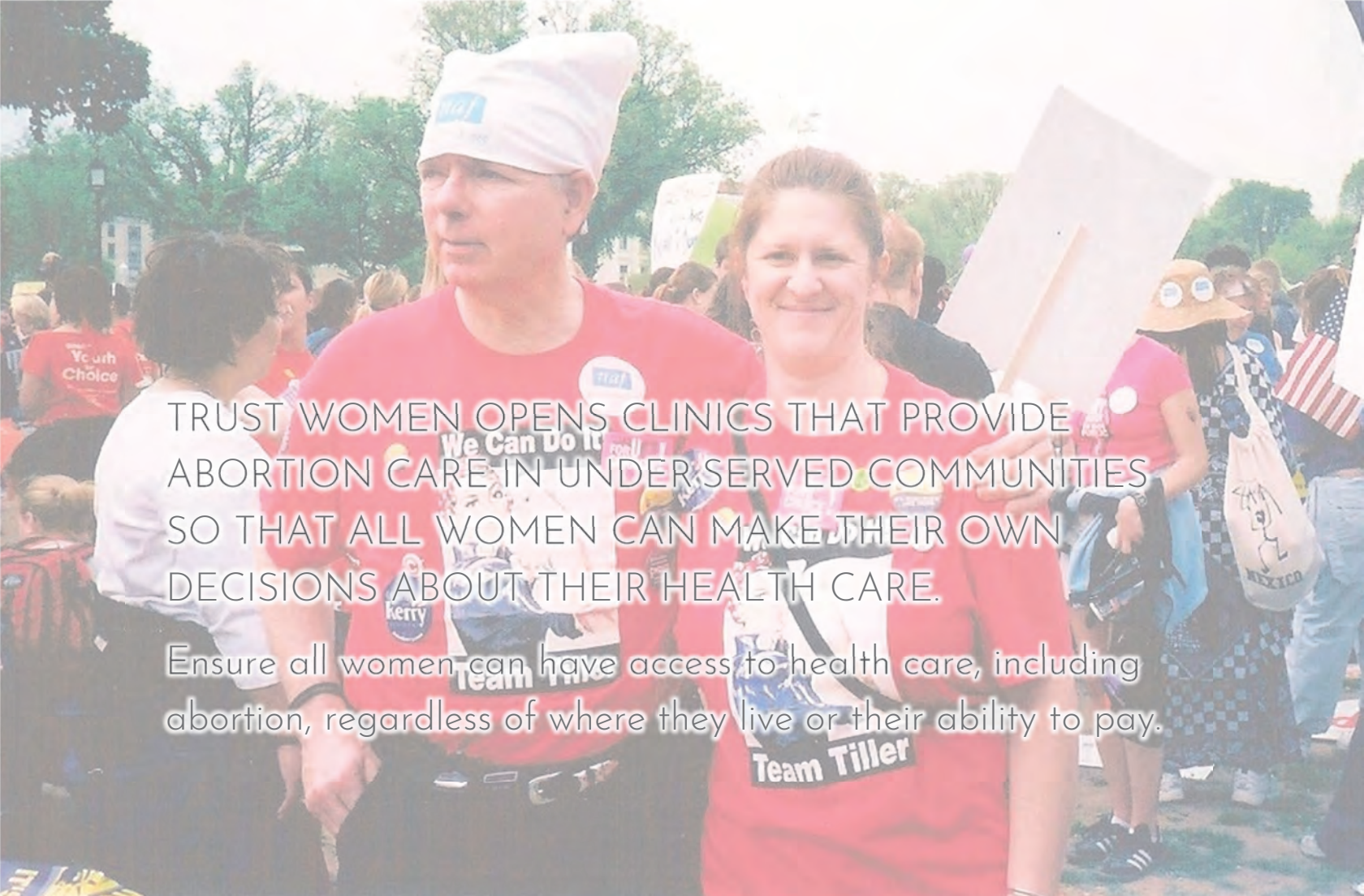
TRUST  WOMEN'S
10 YEAR ANNIVERSARY

PERSEVERANCE

SATURDAY, 9 NOVEMBER 2019

3 P.M. to 6 P.M.
HYATT REGENCY WICHITA
400 W. WATERMAN ST.

in celebration and honor of George R. Tiller, M.D.



TRUST WOMEN OPENS CLINICS THAT PROVIDE ABORTION CARE IN UNDER-SERVED COMMUNITIES SO THAT ALL WOMEN CAN MAKE THEIR OWN DECISIONS ABOUT THEIR HEALTH CARE.

Ensure all women can have access to health care, including abortion, regardless of where they live or their ability to pay.

I had the honor of working for Dr. George Tiller for seven years as spokesperson for his clinic and as head of his political action committee. I saw how he was hounded at his work, his home, his house of worship, even in the courts. Anti-choice organizations made him target number one with protests and violence.

Working for him, I learned first-hand the perseverance and resilience it takes to fight for abortion access. For 37 years, before anti-choice extremists took his life, Dr. Tiller kept the doors of his clinic open. We must continue to do no less for women today. Trust Women is named in his honor, for the blue button he wore to work daily. Our mission and our unceasing drive for justice are to carry on his legacy and to bring equality to all people. Dr. Tiller inspired me to found this organization and he inspired countless others.

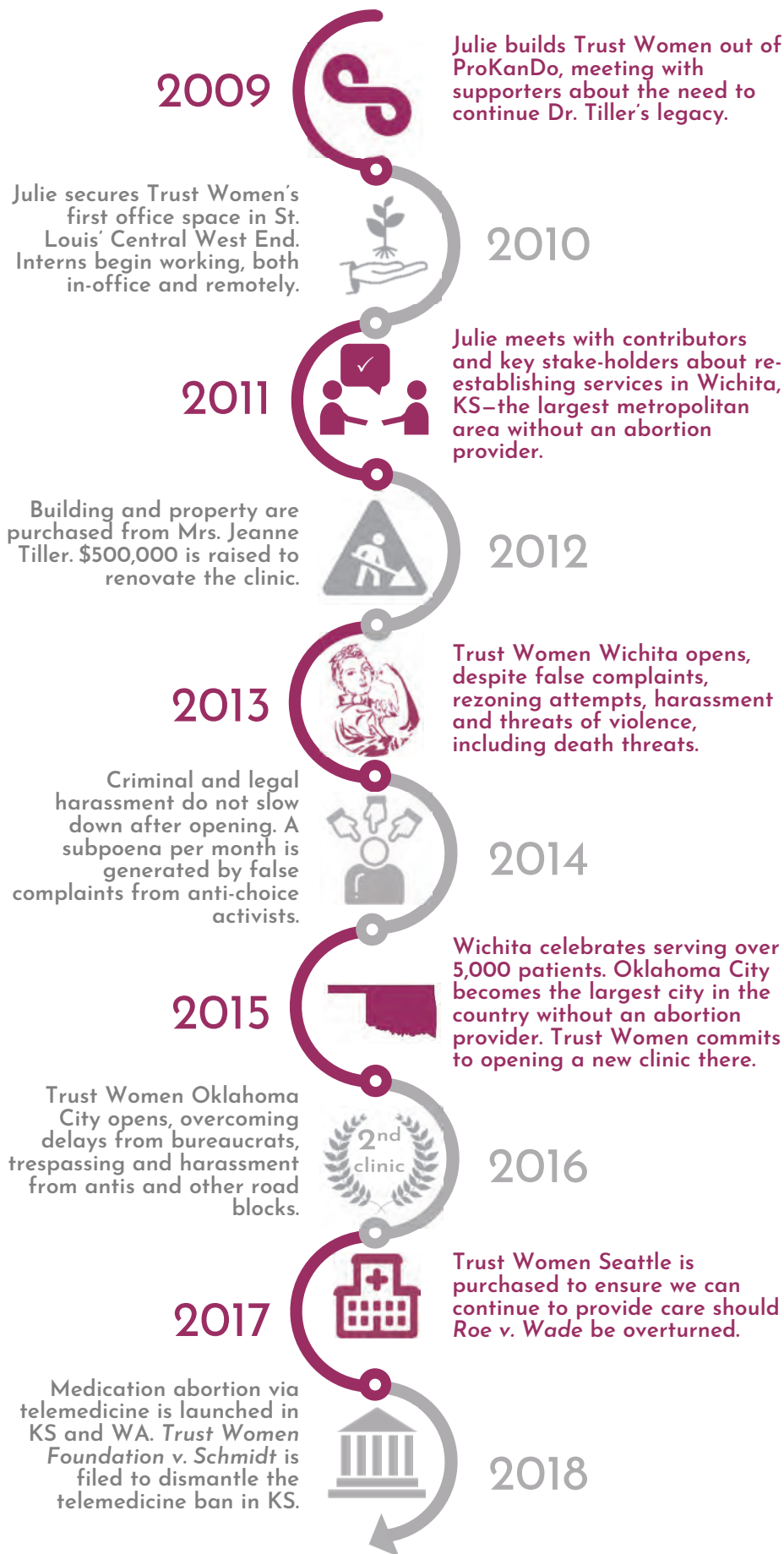
Our 10 Year Anniversary will be an event to remember. We will reflect on the past 10 years, celebrate Dr. Tiller and honor his commitment to abortion care as a "woman-educated doctor."

In 2013, four years after his murder, Trust Women, after facing numerous challenges, opened Trust Women Wichita. We were able to re-introduce abortion access to the area. This booklet is a brief outline of our vision and history.

Like my boss and mentor, we will not back down, even in the face of hardship and challenges. I hope you will join us in celebrating.

Warm regards,

Julie A. Burkhart, *Founder and CEO*



WHY TRUST WOMEN

At one time, there were 27 physicians performing abortions from Kansas City to Denver, and from Omaha to Oklahoma City. When Trust Women Wichita opened in 2013, it was the only clinic within that radius.

Ten years after Dr. Tiller's death, access is even more limited.

We are committed to providing abortion care up to the legal limit at all of our sites.

That's why Trust Women protects access where we have it and also expands access. The fact is that even though women have the right to abortion, without a place to go, there is no real choice. Trust Women has the experience and the expertise to expand and protect access in places considered impossible or "too far gone."

Trust Women expanded access in Wichita in 2013, in Oklahoma City in 2016, in Seattle in 2017. And again in 2018 by expanding the use of medication abortion via telemedicine in Kansas and Washington State.

Despite all the obstacles, Trust Women is committed to ensuring that more women have access to abortion.

WHAT IT MEANS FOR WOMEN

Abortion is a taboo subject, but a common experience. One in three women will have an abortion in her lifetime.

Without the services of Trust Women in KS and OK, almost 270,000 women, 15 to 44 years old, could encounter increased obstacles in securing abortion care. For some, this will mean traveling over 300 miles round trip. Many women, while delaying/being delayed, will go beyond the legal limits for care. Some may self-induce abortion by other methods.

Here are a few of the challenges our patients and our clinics regularly face:

Private insurance bans require women to purchase an "abortion-rider" ahead of time, in order to have coverage. In six years, we have encountered a handful of such policies. We do not turn away women who are unable to afford care.

Violence by anti-choice extremists has deterred local physicians from providing abortions in hostile states. It took two years to secure an out-of-state physician willing to practice in Wichita. Physicians continue to fly in weekly.

Restrictive state laws create a gauntlet of obstacles for patients; e.g. waiting periods up to 72 hours, notarized parental consent, laws that ban mid-level clinicians from performing abortions, requirements that doctors providing medication abortion be physically in the same room, prohibiting the use of telemedicine.

Punitive laws are imposed on our clinics in hostile, anti-choice states. Trust Women clinics are forced to adhere to medically irrelevant policies, driving up cost and patient wait-times.



18,000 PATIENTS SERVED

OPPORTUNITIES TO EXPAND ACCESS: SPONSORSHIP LEVELS



\$50,000

A contribution at this level would provide 67 contraceptive devices. Long-acting reversible contraceptives, such as IUDs and Nexplanon are financially out of reach for uninsured patients.

\$25,000

A contribution at this level would cover the cost of two new ultrasound machines. Each clinic requires two machines; they are used during abortion care, but also for family planning and well woman care. These machines are used numerous times each day.



\$10,000

A contribution at this level would help approximately 50 women pay for an abortion. Last year, 36%* of our patients required funding assistance; most needed an additional \$200 to help pay for the procedure. (*42% at sites where abortion is not covered by insurance)

\$5,000

A contribution at this level would help pay for approximately one year of malpractice insurance, for one physician, for one state. In Kansas and Oklahoma, Trust Women still flies physicians in each week for abortion care.



\$2,500

A contribution at this level would help pay for internal security cameras at all Trust Women clinics. These must be replaced periodically with everyday use.

Your sponsorship will help fight the erosion of women's reproductive rights in hostile areas, in states where women are increasingly disenfranchised by not having access to the care they need.



THOSE WHO SAY IT CANNOT BE DONE
SHOULD NOT INTERRUPT THOSE
WHO ARE DOING IT

~ GEORGE R. TILLER M.D.

from a framed sign from Dr. Tiller that hangs in Julie's office.